

Nevada Water Resources Association 2014 Annual Conference

Economic Development and Urban Water Supplies

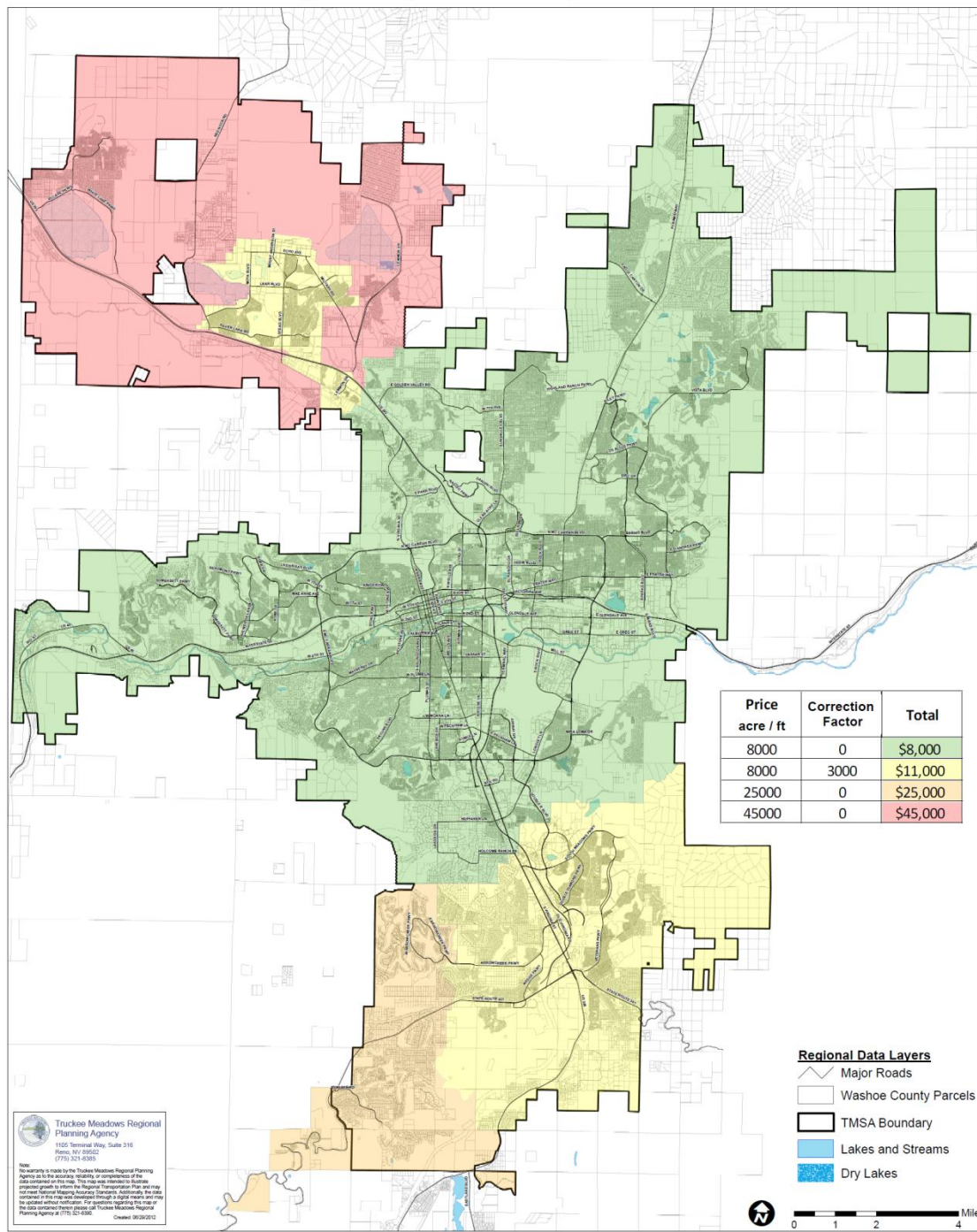
February 6, 2014

Planning for Future Water Uses and Supporting Infrastructure

Jim Smitherman

Program Manager, Northern Nevada Water Planning Commission

Water: Estimated Water Right Price per Acre Foot plus Return Flow Correction - DRAFT








Price acre / ft	Correction Factor	Total
8000	0	\$8,000
8000	3000	\$11,000
25000	0	\$25,000
45000	0	\$45,000


Truckee Meadows Regional Planning Agency
 1105 Terminal Way, Suite 216
 Reno, NV 89502
 (775) 321-6385

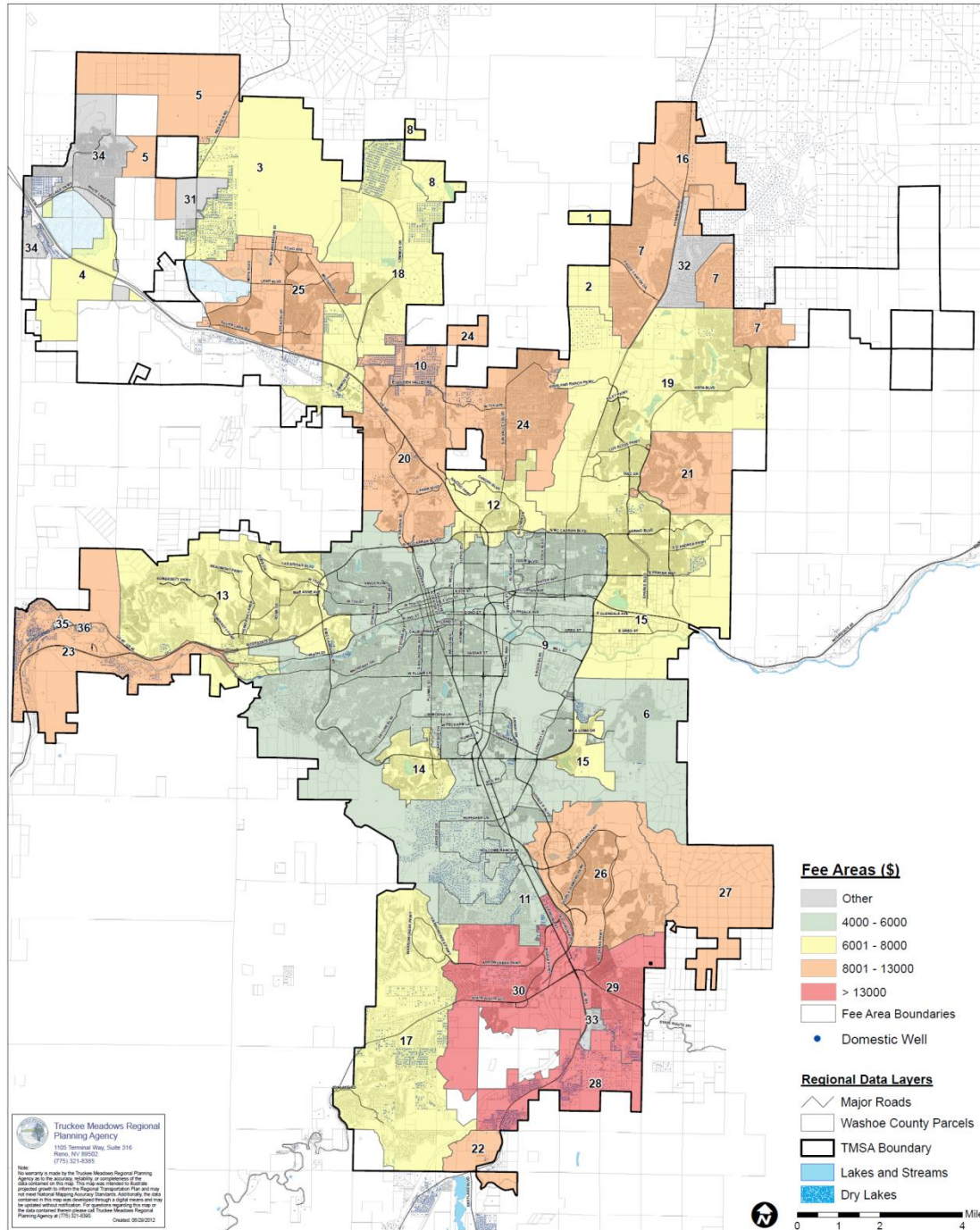
Note:
 No warranty is made by the Truckee Meadows Regional Planning Agency as to the accuracy, reliability, or completeness of the data contained on this map. This map was prepared to facilitate project growth in order to improve transportation flow and meet the regional planning needs of the region. Additionally, the map was prepared on the basis of the best available information and may be subject to change without notice. For questions regarding the map or the data contained herein please call Truckee Meadows Regional Planning Agency at (775) 321-6385.

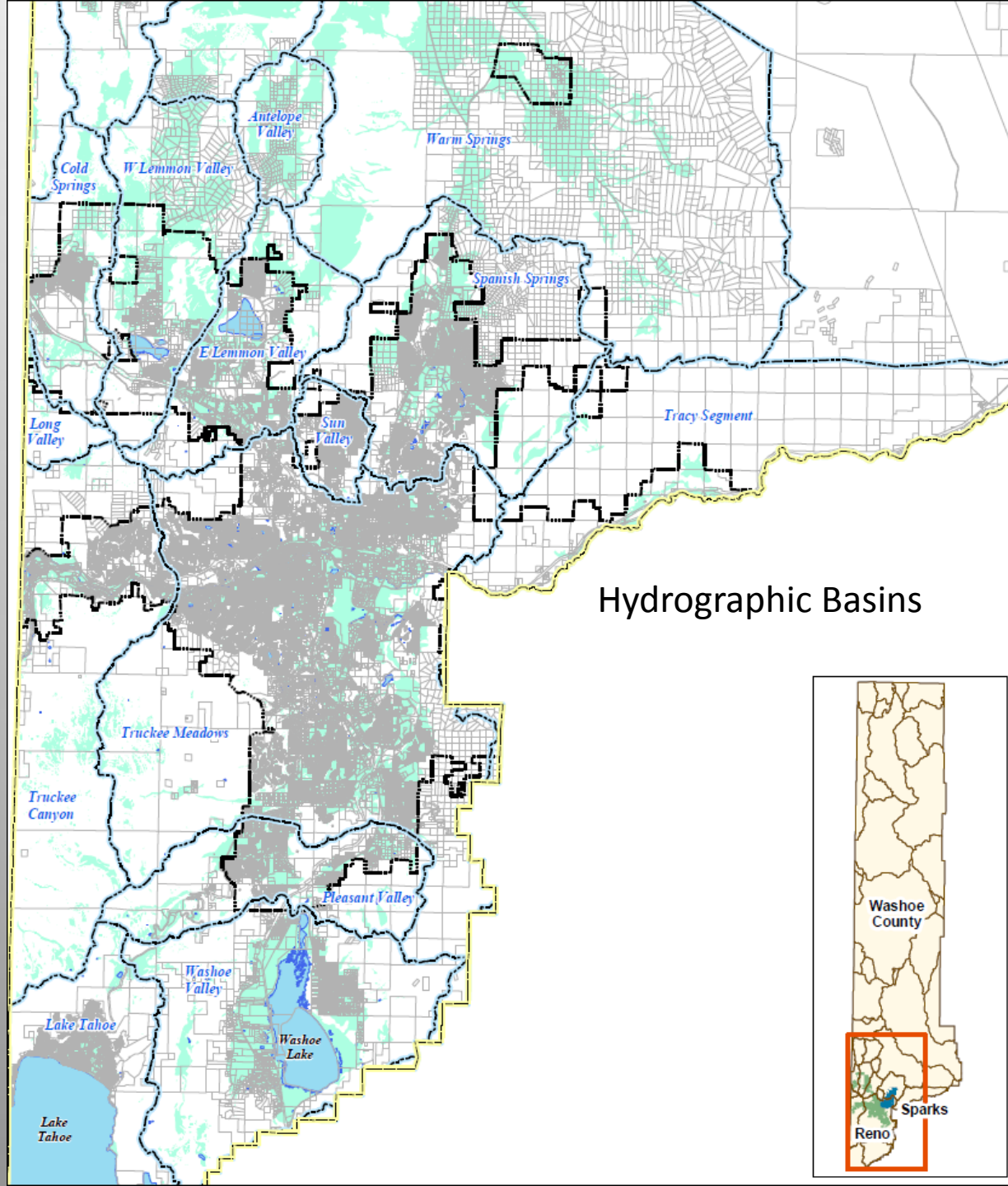
Regional Data Layers

-  Major Roads
-  Washoe County Parcels
-  TMSA Boundary
-  Lakes and Streams
-  Dry Lakes

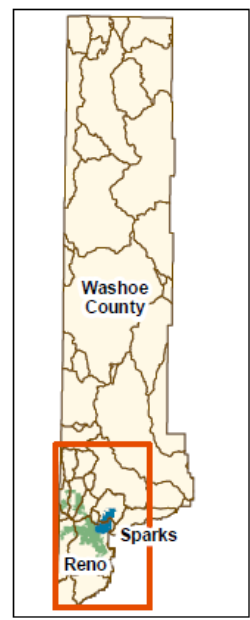


Water: Estimated Facility Charges - DRAFT

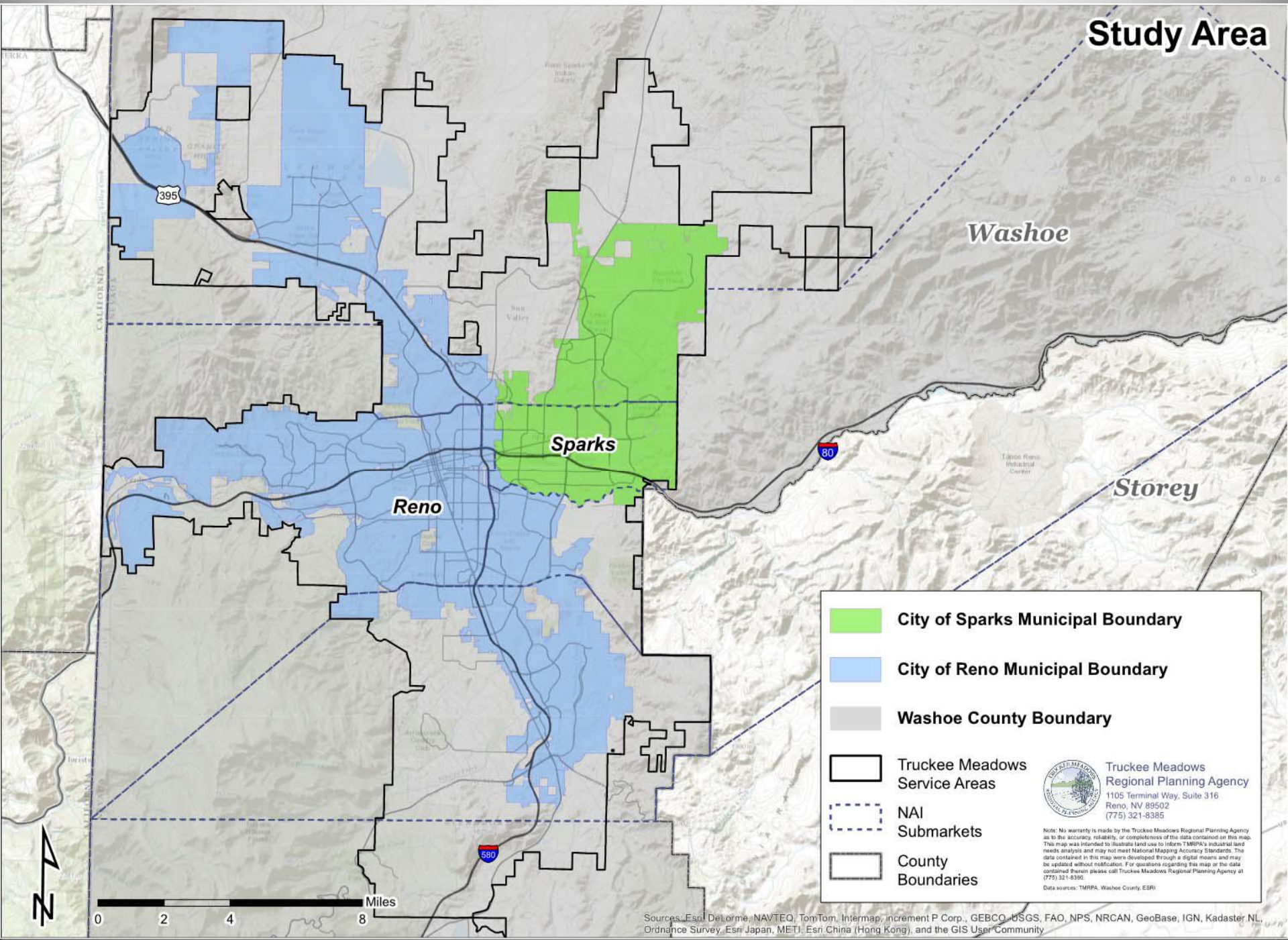




Hydrographic Basins



Study Area



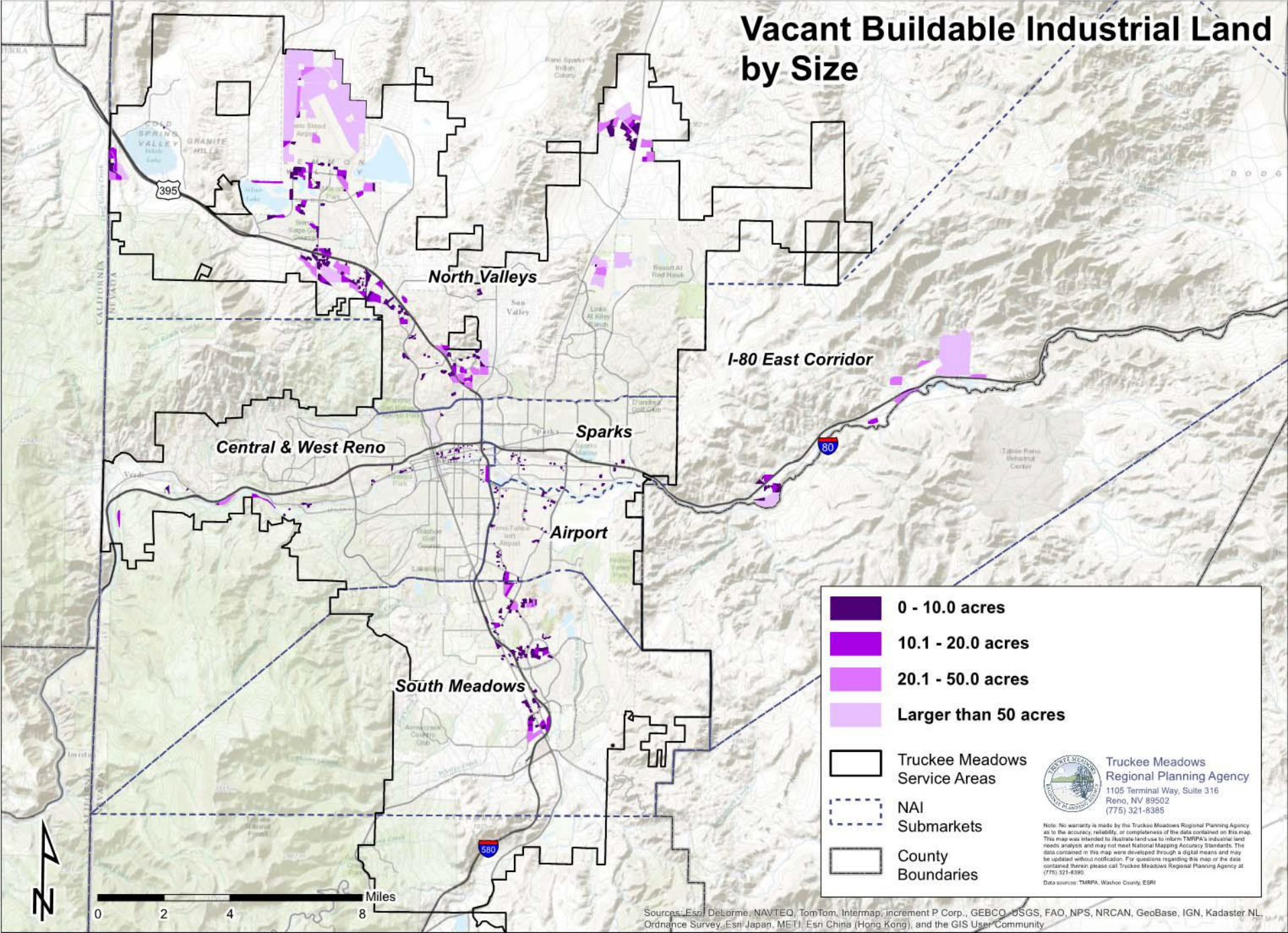
-  **City of Sparks Municipal Boundary**
-  **City of Reno Municipal Boundary**
-  **Washoe County Boundary**
-  **Truckee Meadows Service Areas**
-  **NAI Submarkets**
-  **County Boundaries**

 **Truckee Meadows Regional Planning Agency**
1105 Terminal Way, Suite 316
Reno, NV 89502
(775) 321-8385

Note: No warranty is made by the Truckee Meadows Regional Planning Agency as to the accuracy, reliability, or completeness of the data contained on this map. This map was intended to illustrate land use to inform TMRA's industrial land needs analysis and may not meet National Mapping Accuracy Standards. The data contained in this map were developed through a digital means and may be updated without notification. For questions regarding this map or the data contained therein please call Truckee Meadows Regional Planning Agency at (775) 321-8390.
Data sources: TMRA, Washoe County, ESRI

Sources: Esri, DeLorme, NAVTEQ, TomTom, Intermap, increment P Corp., GEBCO, USGS, FAO, NPS, NRCAN, GeoBase, IGN, Kadaster NL, Ordnance Survey, Esri Japan, METI, Esri China (Hong Kong), and the GIS User Community

Vacant Buildable Industrial Land by Size



- 0 - 10.0 acres
- 10.1 - 20.0 acres
- 20.1 - 50.0 acres
- Larger than 50 acres

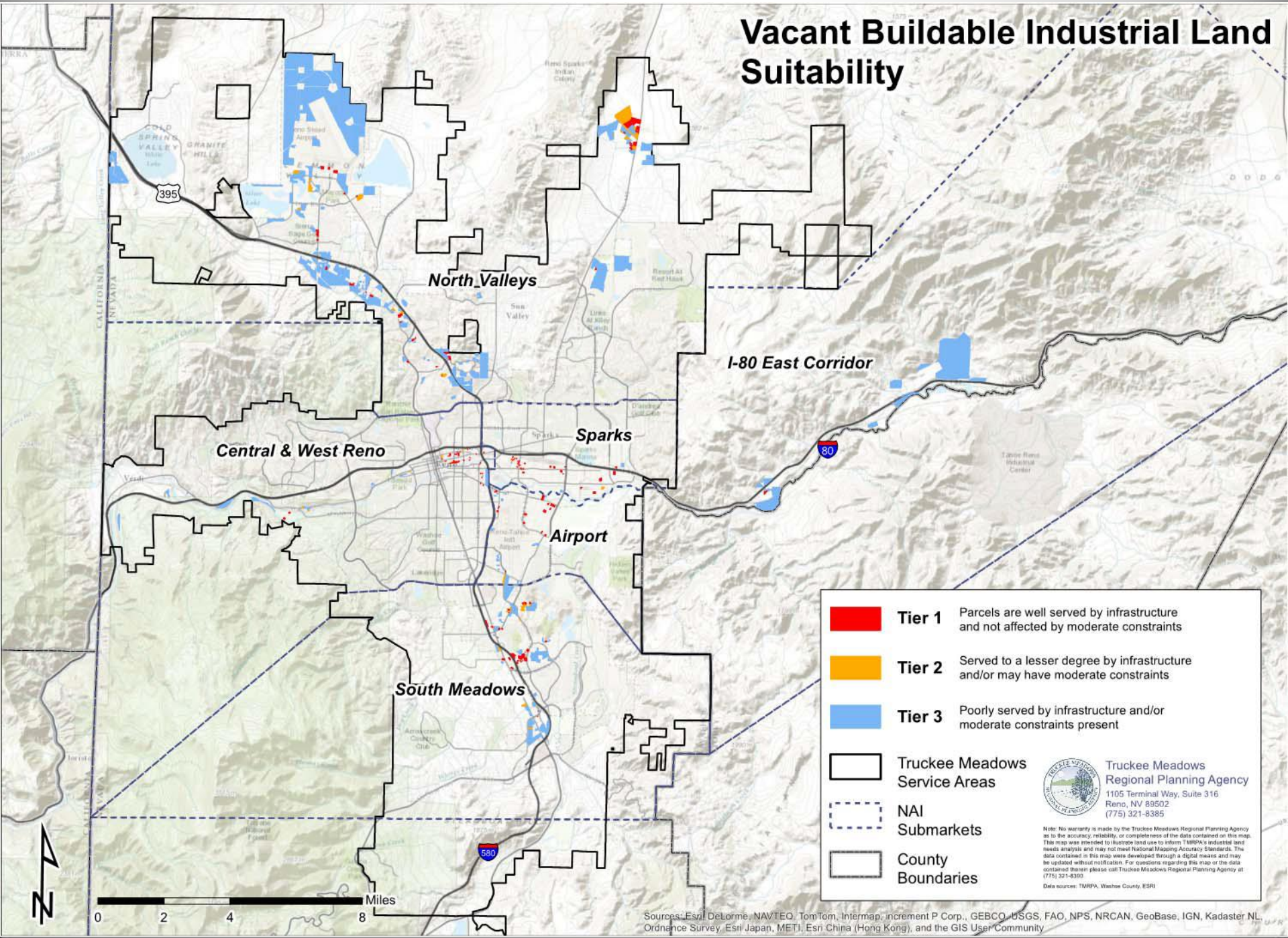
- Truckee Meadows Service Areas
- NAI Submarkets
- County Boundaries


Truckee Meadows Regional Planning Agency
 1105 Terminal Way, Suite 316
 Reno, NV 89502
 (775) 321-8385

Note: No warranty is made by the Truckee Meadows Regional Planning Agency as to the accuracy, reliability, or completeness of the data contained on this map. This map was intended to illustrate land use to inform TMRPA's industrial land needs analysis and may not meet National Mapping Accuracy Standards. The data contained in this map were developed through a digital means and may be updated without notification. For questions regarding this map or the data contained therein please call Truckee Meadows Regional Planning Agency at (775) 321-8390.
 Data sources: TMRPA, Washoe County, ESRI

Sources: Esri, DeLorme, NAVTEQ, TomTom, Intermap, increment P Corp., GEBCO, USGS, FAO, NPS, NRCAN, GeoBase, IGN, Kadaster NL, Ordnance Survey, Esri Japan, METI, Esri China (Hong Kong), and the GIS User Community

Vacant Buildable Industrial Land Suitability

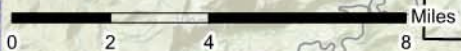


	Tier 1	Parcels are well served by infrastructure and not affected by moderate constraints
	Tier 2	Served to a lesser degree by infrastructure and/or may have moderate constraints
	Tier 3	Poorly served by infrastructure and/or moderate constraints present
	Truckee Meadows Service Areas	
	NAI Submarkets	
	County Boundaries	

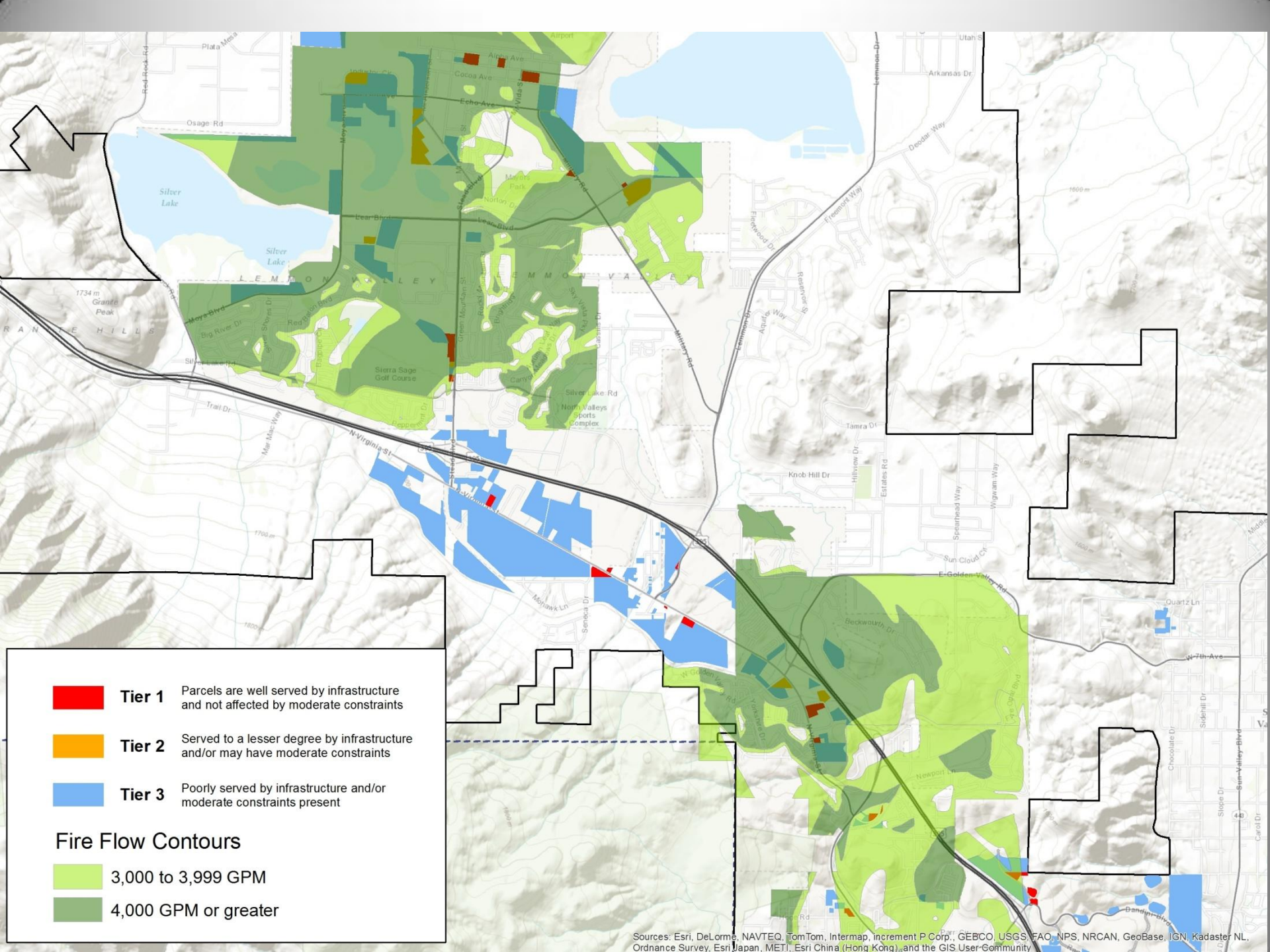


Truckee Meadows Regional Planning Agency
 1105 Terminal Way, Suite 316
 Reno, NV 89502
 (775) 321-8385

Note: No warranty is made by the Truckee Meadows Regional Planning Agency as to the accuracy, reliability, or completeness of the data contained on this map. This map was intended to illustrate land use to inform TMRPA's industrial land needs analysis and may not meet National Mapping Accuracy Standards. The data contained in this map were developed through a digital means and may be updated without notification. For questions regarding this map or the data contained therein please call Truckee Meadows Regional Planning Agency at (775) 321-8390.
 Data source: TMRPA, Washoe County, ESRI



Sources: Esri, DeLorme, NAVTEQ, TomTom, Intermap, increment P Corp., GEBCO, USGS, FAO, NPS, NRCAN, GeoBase, IGN, Kadaster NL, Ordnance Survey, Esri Japan, METI, Esri China (Hong Kong), and the GIS User Community



Sources: Esri, DeLorme, NAVTEQ, TomTom, Intermap, increment P Corp., GEBCO, USGS, FAO, NPS, NRCAN, GeoBase, IGN, Kadaster NL, Ordnance Survey, Esri Japan, METI, Esri China (Hong Kong), and the GIS User-Community

Vacant Buildable Industrial Land in TMSA (Non-Airport Lands) by Suitability Category & Parcel Size

Parcel Size Category (Acres)	Tier 1 Acres/#Parcels	Tier 2 Acres/#Parcels	Tier 3 Acres/#Parcels
0.0 - 10.0	167/160	92/48	660/274
10.1 - 20.0	0/0	28/2	558/43
20.1 - 50.0	50/1	0/0	688/25
50.1 and above	0/0	77/1	507/6
Total	217/161	197/51	2,413/348

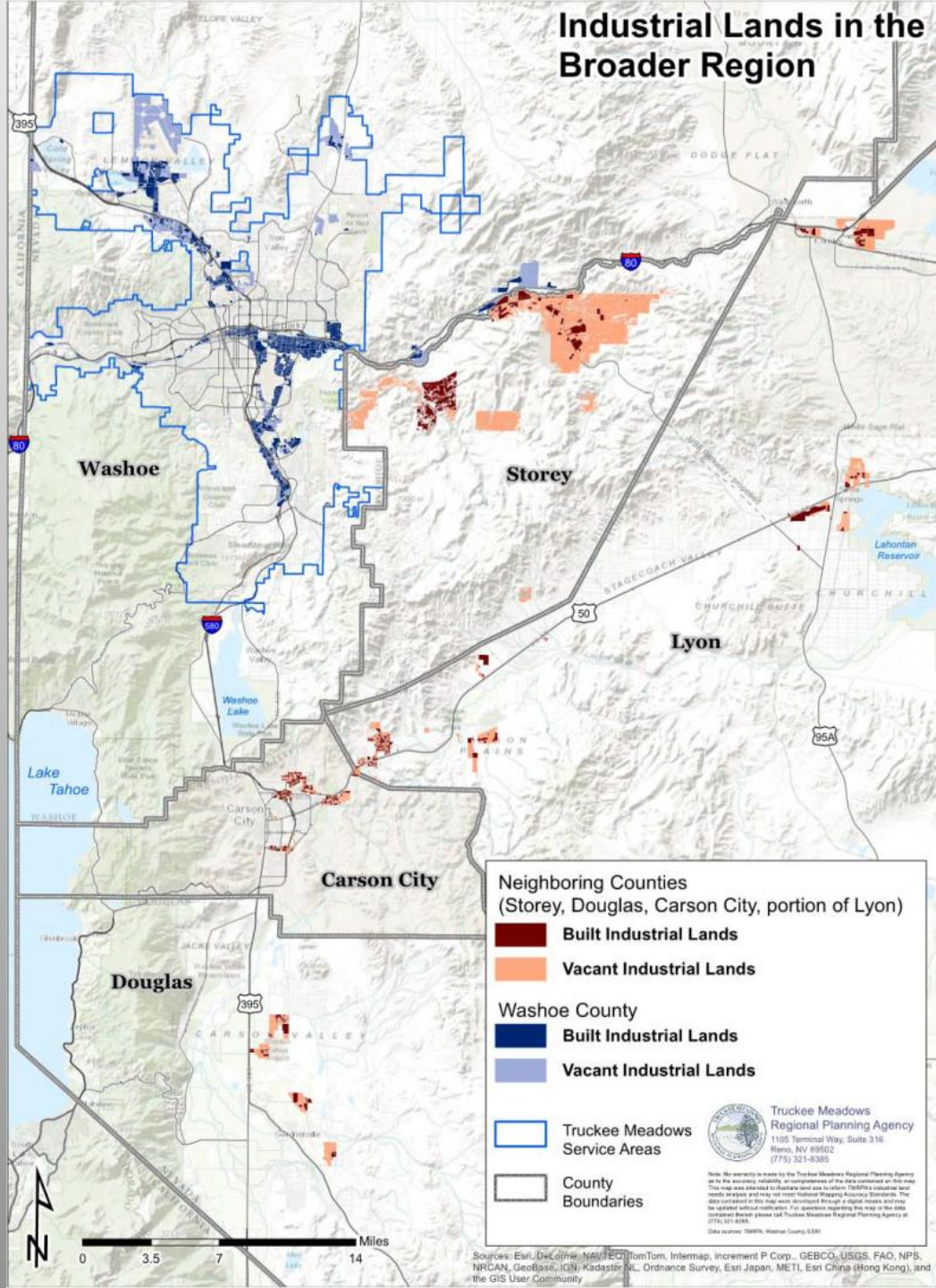
Sources of Information

2011-2030 Comprehensive Regional Water Management Plan
(view at www.nnwpc.us)

Truckee Meadows Regional Plan
(view at www.tmrpa.org)

Truckee Meadows Regional Industrial Lands Analysis
(view at www.tmrpa.org)

Industrial Lands in the Broader Region



Neighboring Counties
(Storey, Douglas, Carson City, portion of Lyon)

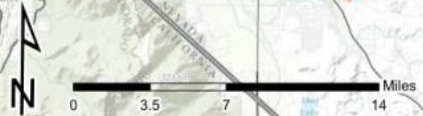
- Built Industrial Lands
- Vacant Industrial Lands

- Washoe County
- Built Industrial Lands
 - Vacant Industrial Lands

- Truckee Meadows Service Areas
- County Boundaries

 Truckee Meadows Regional Planning Agency
1105 Terminal Way, Suite 316
Reno, NV 89502
(775) 321-8385

Note: No warranty is made by the Truckee Meadows Regional Planning Agency as to the accuracy, reliability, or completeness of the data contained on this map. This map was intended to assist the user in making TRMRA's industrial land needs analysis and only for most National Mapping Agency Standards. The data contained in this map were developed through a digital process and may be updated without notification. For questions regarding the map or the data contained therein, please call Truckee Meadows Regional Planning Agency at (775) 321-8385.
Data sources: 2008/09, Washoe County, GISRI



Sources: Esri, DeLorme, NAVTEQ, TomTom, Intermap, increment P Corp., GEBCO, USGS, FAO, NPS, NRCAN, GeoBase, IGN, Kadaster NL, Ordnance Survey, Esri Japan, METI, Esri China (Hong Kong), and the GIS User Community